

# Xtek

Solutions in Motion™

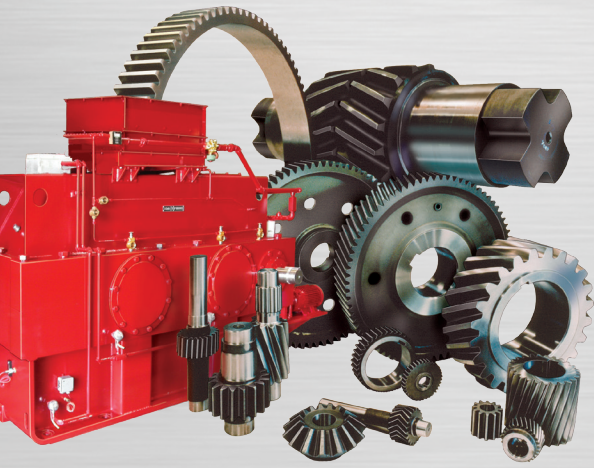


Xtek's Cincinnati Campus

## Xtek: World leader in components for heavy industry.

- An employee owned, ISO 9001 certified company, with plants in Cincinnati, Ohio; Hammond, Indiana; Hamilton, Ontario, Canada; and Plzen, Czech Republic
- Member of AGMA, AIST, ASME, ASM
- All heat-treating, engineering and manufacturing performed in-house
- Bradley Lifting is an Xtek subsidiary with headquarters in York, Pennsylvania.
- Avon Engineering is an Xtek Canada subsidiary located in Hamilton, Ontario.

[www.xtek.com](http://www.xtek.com)



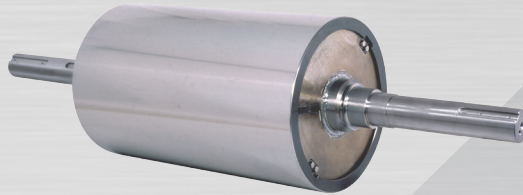
## Gearing & Gearboxes

- AGMA Class 15 capability
- TSP carburizing to 58-62 Hrc
- Gear diameters from 10"-100"
- Up to 100,000 pounds
- Reverse engineering and FEA analysis is available
- Gearbox reconditioning specialists



## Gear Spindle Couplings & Universal Joints

- World leader in couplings
- All driveshaft products are custom designed for your application
- All wear components TSP carburized to 58-62 Hrc
- Reconditioning specialists



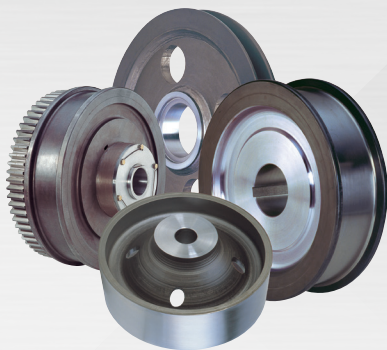
## Roll Products

- Custom engineered specialty and processing rolls for rolling mill applications
- Specialty rolls for food processing, paper mills, and other industrial sectors
- Proprietary Bemcalloy™ pinch rolls available only from Xtek



## Below-The-Hook Lifting Products & Floor-Based Equipment

- Design & manufacture of heavy duty lifting and material handling equipment
- Multiple options for handling coil, slab, sheet, ingot, tube and specialty products
- Licensed, professional engineers on staff
- Lifter inspection services
- Repair and retrofitting of all lifter brands



## Hardened Steel Wheels & Wheel Assemblies

- Xtek crane, brake and sheave wheels are the industry's longest lasting wheel products
- Proprietary heat treatment provides industry's best performing wheels
- Emergency breakdown services available



## Xtek, Inc.

11451 Reading Road  
Cincinnati, OH 45241

p (888) 332-9835

f (513) 733-7939

Emergency Serv. (513) 733-7984

www.xtek.com