

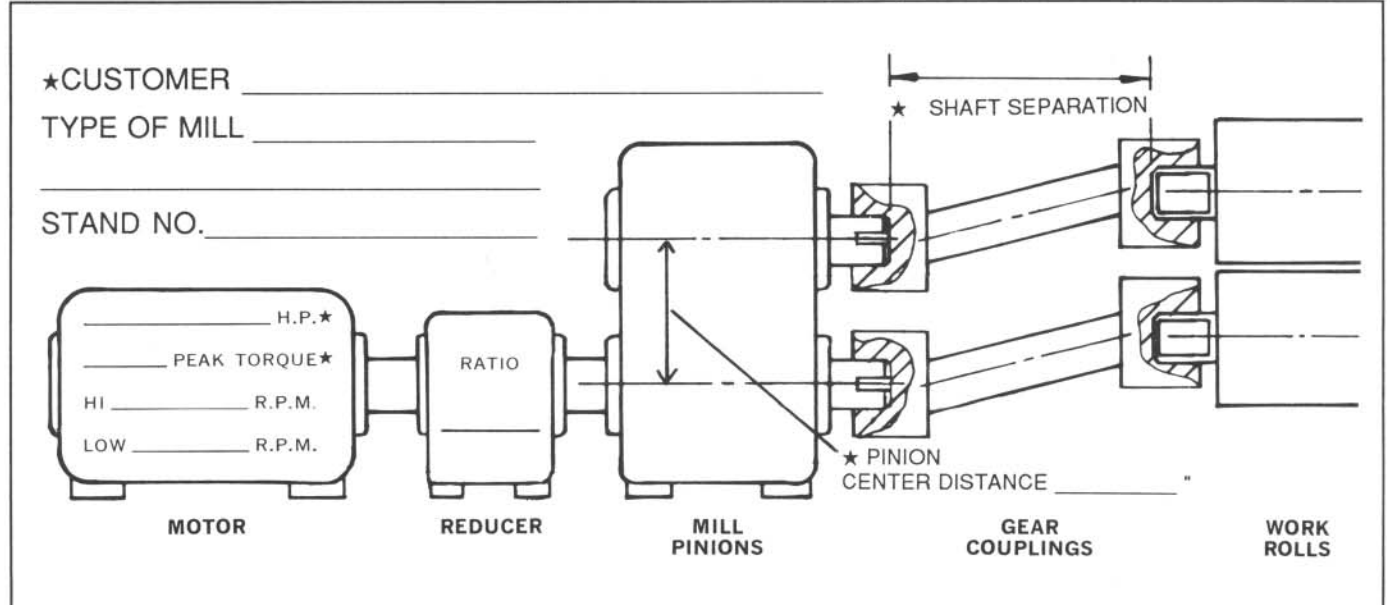
TSP coupling data forms



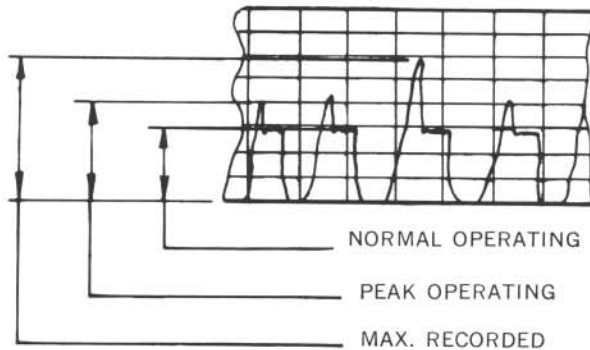
11451 Reading Road
Cincinnati, Ohio 45241-2283
Phone 513-733-7800

coupling / data sheet

Specifications marked with ★ are minimum requirements for estimated proposals only.



AMPERAGE CHART



POINT WHERE OVERLOAD RELAYS ARE SET?
 _____ INSTANTANEOUS

MOTOR RATING:
 _____ H.P. AT _____ AMPERES
 AND _____ RPM.

★PLEASE FILL IN ONE SET (A OR B) OF THE FOLLOWING DATA:

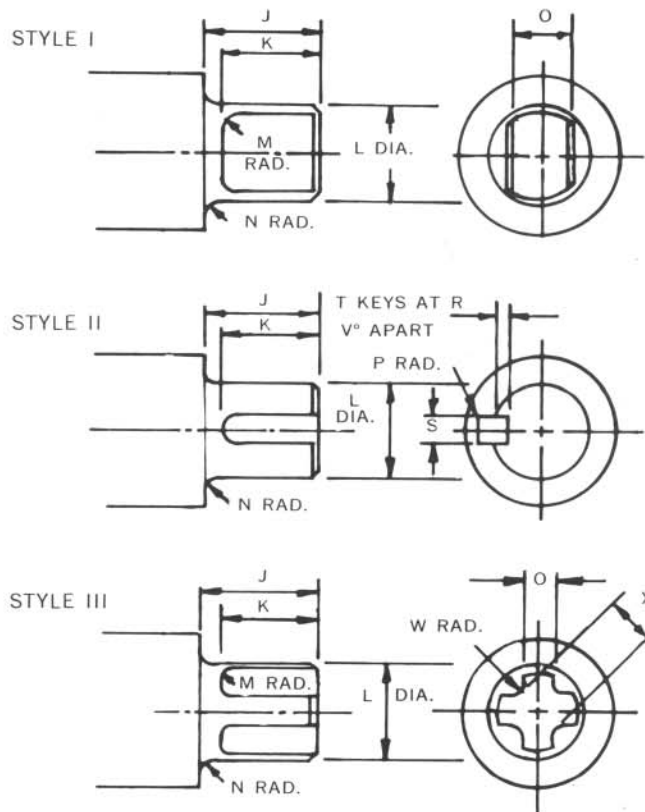
- A. MAXIMUM ANGLE AT ROLL CHANGE: _____ ° _____ ' _____ "
 MAXIMUM STATIC ANGLE: _____ ° _____ ' _____ "
 MAXIMUM OPERATING ANGLE: _____ ° _____ ' _____ "

- B. DIMENSION FROM CENTERLINE OF TOP PINION TO CENTERLINE OF TOP ROLL AT:
 ROLL CHANGE _____ "
 MAXIMUM STATIC ANGLE _____ "
 MAXIMUM OPERATING ANGLE _____ "

DIMENSION FROM CENTERLINE OF BOTTOM PINION TO CENTERLINE OF BOTTOM ROLL AT:
 ROLL CHANGE _____ "
 MAXIMUM STATIC ANGLE _____ "
 MAXIMUM OPERATING ANGLE _____ "

★ROLL SIZES:

MAXIMUM DIAMETER: _____ " MINIMUM DIAMETER _____ "



	PINION NECK JOURNAL	ROLL NECK JOURNAL
STYLE		
MAT'L		
J		
K		
L		
M		
N		
O		
P		
R		
S		
T		
V		
W		
X		

1. IS THIS A REVERSING APPLICATION? YES NO
2. HOW IS COUPLING REMOVED? VERTICAL HORIZONTAL
3. IS A SHEAR IN THE COUPLING REQUIRED? YES NO
4. IS THERE A FLYWHEEL IN THE DRIVETRAIN? YES NO

5. DRAWINGS THAT WE WOULD LIKE TO SEE:

- GENERAL ARRANGEMENT - SIDE ELEVATION AND FLOOR PLAN.
- ROLL DETAIL, PINION DETAIL.
- ANY DRAWINGS OF THE COUPLINGS NOW BEING USED.
- AMPERAGE AND R.P.M. CHARTS FOR AT LEAST 12 HOURS OF TYPICAL SERVICE.

6. DESCRIBE THE MODE OF FAILURE OR PROBLEMS ASSOCIATED WITH THE PRESENT COUPLINGS AND ANYTHING WHICH MIGHT BE UNUSUAL ABOUT THIS APPLICATION.
